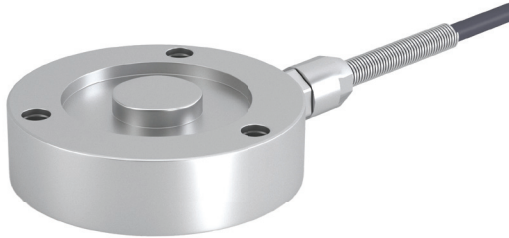
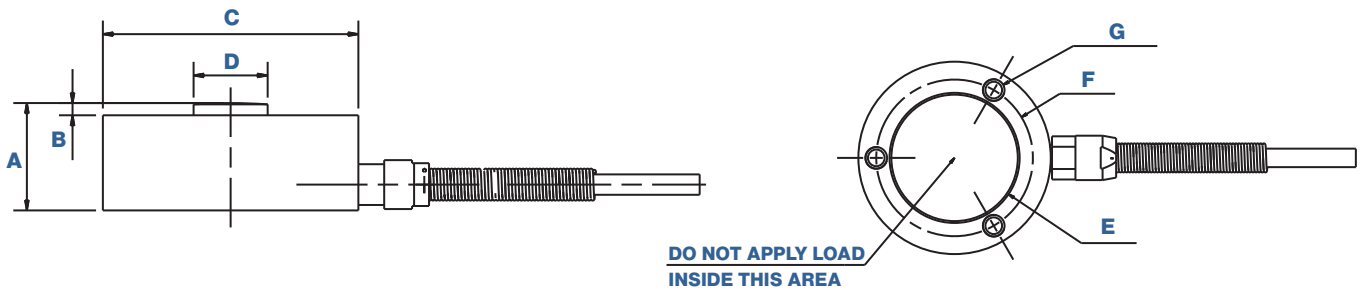


TC-LB Series | Miniature Load Buttons

Description



With its low height and small diameter, the TC-LB Series can capture compressive force measurements from within the tightest spots. Integrated mounting threads make fixturing easy and stainless-steel construction ensures performance in harsh environments.



Dimensional Attributes

CAPACITIES			100 to 2000 lbf		5000 and 10000 lbf	
UNITS			in	mm	in	mm
Heights	Overall	A	0.39	9.9	0.62	15.8
	Loading Dome	B	0.05	1.3	0.07	1.8
Diameters	Outer	C	1.23	31.2	1.48	37.6
	Loading Dome	D	0.32	8.1	0.43	10.9
	No Load	E	0.83	21.1	1.08	27.4
	Thread Circle	F	1	25.4	1.25	31.8
Mounting Threads		G	#6-32 UNC x 0.25		#6-32 UNC x 0.27	

TC-LB Series | Miniature Load Buttons

General Specifications				
Safe Overload	±150% of Capacity			
Material	17-4PH			
IP Rating	IP64			
ELECTRICAL ATTRIBUTES		TEMPERATURE ATTRIBUTES		
Rated Output- mV/V	2	Compensated Range	°F	60 to 160
Zero Balance- %RO	±0.06	Operating Range	°F	-60 to 135
Bridge Resistance- ohm	700	Effect on Zero- μV/V	°F	±0.2
Insulation Resistance- Megaohm	≥500 MΩ (at 50 VDC)	Effect on Span- μV/V	°F	±0.4
Rated Excitation Voltage- V AC/ DC	10			
Maximum Excitation Voltage- V AC/ DC	20			
Integrated Cable	4-conductor, 28 AWG with shield			
Cable Length	ft	10		

Accuracy				
PART ID	CAPACITY (lbf)	NONLINEARITY (±lbf)	HYSTERESIS (±lbf)	REPEATABILITY (±lbf)
TC-LB-100LBF	100	0.15	0.15	0.05
TC-LB-250LBF	250	0.375	0.375	0.125
TC-LB-500LBF	500	1.25	1.25	0.25
TC-LB-1KLBF	1000	2.5	2.5	0.5
TC-LB-2KLBF	2000	7	7	1
TC-LB-5KLBF	5000	12.5	12.5	5
TC-LB-10KLBF	10000	25	25	10